



THE CLOVELLY 266



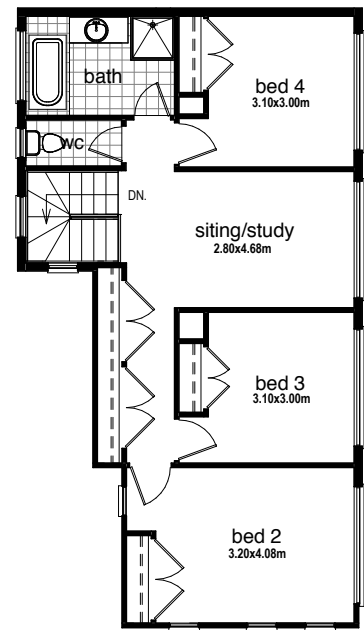
THE CLOVELLY IS OUR NEWEST DOUBLE STOREY HOME & BOY DOES IT TICK ALL THE BOXES!

Ideal for the larger family, this 4 bedroom, 2 bathroom home with its very own theatre room will impress. The kitchen is open plan, with ample cupboard space. Teenagers will love the second family retreat.

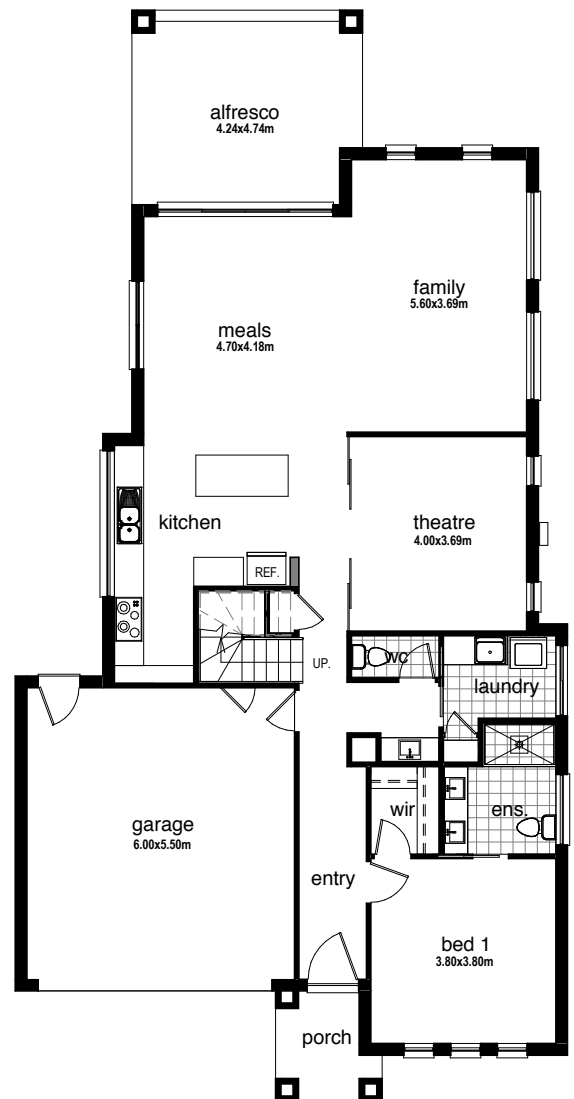
Ground living	132.12 m ²	14.22sq
Upper living	75.89 m ²	8.17sq
Garage	36.19 m ²	3.90sq
Alfresco	18.41 m ²	1.98sq
Porch	4.35 m ²	0.47sq
TOTAL	266.97m²	28.74sq

Exterior Width	11.35m
Exterior Length	22.42m

 **4** |
  **2** |
  **1** |
  **2**



UPPER FLOOR

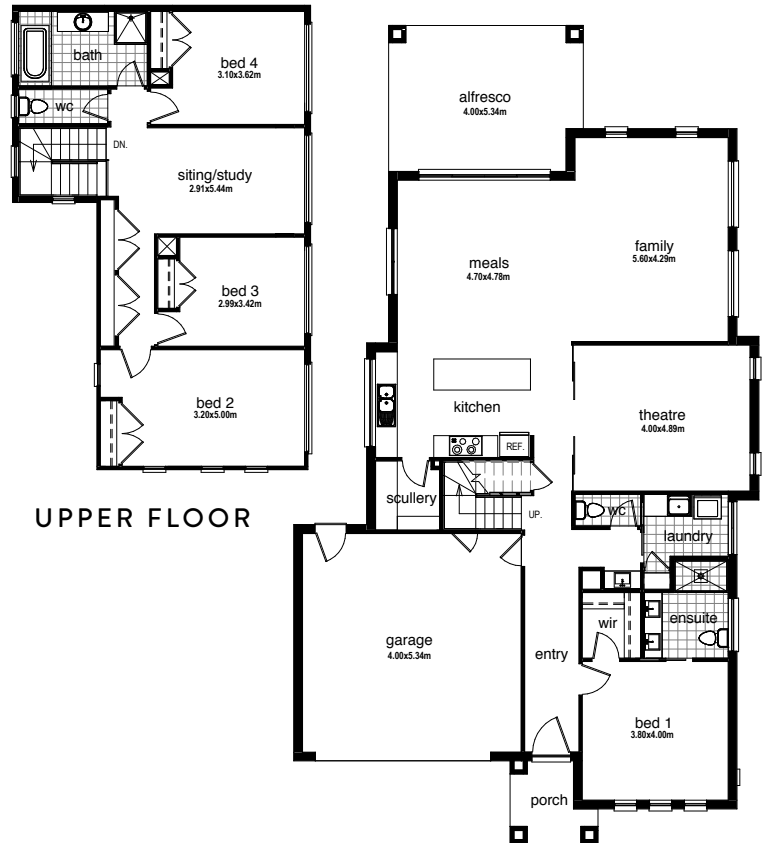


GROUND FLOOR

THE CLOVELLY 300

Ground living	148.76m ²	16.01sq
Upper living	86.97m ²	9.36sq
Garage	39.36m ²	4.24sq
Alfresco	20.81m ²	2.24sq
Porch	4.59m ²	0.49sq
TOTAL	300.49m²	32.35sq

Exterior Width	12.75m
Exterior Length	22.42m



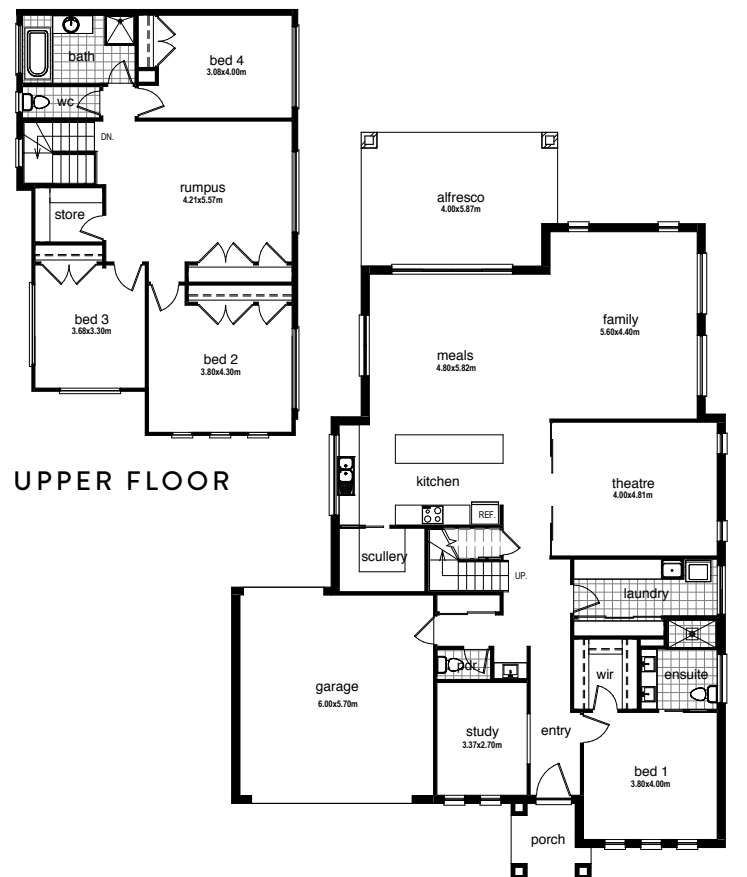
UPPER FLOOR

GROUND FLOOR

THE CLOVELLY 340

Ground living	175.35 m ²	18.87sq
Upper living	98.99m ²	10.66sq
Garage	38.31m ²	4.12sq
Alfresco	23.48m ²	2.53sq
Porch	4.80m ²	0.52sq
TOTAL	340.93m²	36.70sq

Exterior Width	14.75m
Exterior Length	22.32m



UPPER FLOOR

GROUND FLOOR